



# ScanXL

ScanXL is an advanced diagnostic software package for use exclusively with the ElmScan 5 series of OBD-II compliant scan tools. This feature-packed software will meet the needs of the professional mechanic and automotive enthusiast alike.

## DIAGNOSTICS



**Trouble Codes** allows the user to read and clear diagnostic trouble codes from the engine ECU.



**Data View** can be configured using **PID Config** to display custom view of sensors and data.



**Freeze Frame Data** retrieves the stored “snapshot” of engine parameters when the ECU stores a trouble code.



**Oxygen Sensors** displays the sensor locations, voltage thresholds and switch times.



**Monitor Status** shows the status of continuous and non-continuous ECU tests (used as a prerequisite for emissions testing in many states).



**Alerts** can be set to indicate when a sensor value has reached a user defined value.

The screenshots illustrate the ScanXL software interface. The top window shows the 'Trouble Codes' section with a table of DTCs:

DTC	Description	ECU
P0100	Mass or Volume Air Flow Circuit Malfunction	\$7E8
P0200	Injector Circuit Malfunction	\$7E8

The middle window shows the 'Alerts' configuration screen with a list of alert conditions and a 'Settings' panel for defining conditions and operators.

The bottom window shows the 'Oxygen Sensors' section with a table of test results and a graph titled 'Oxygen Sensor Output Example' showing rich and lean sensor output over time.



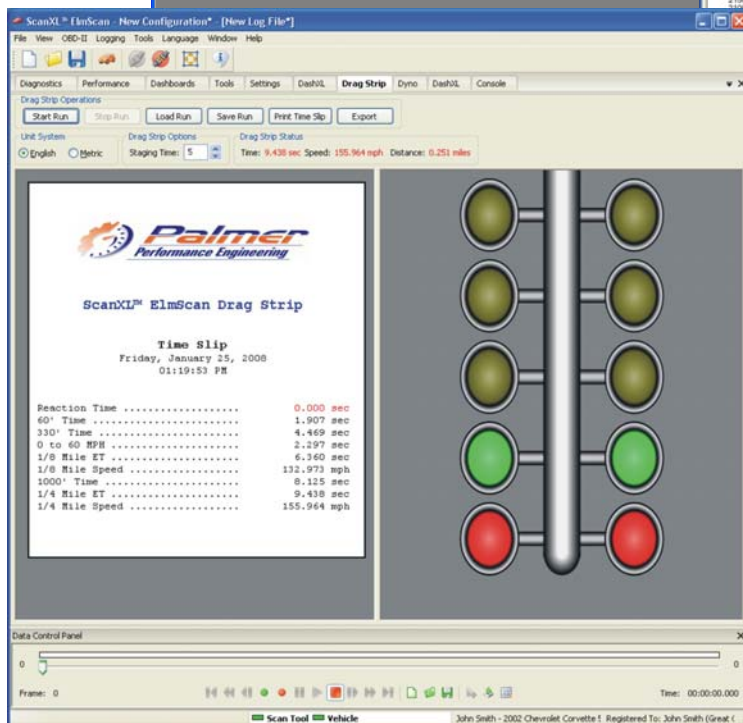
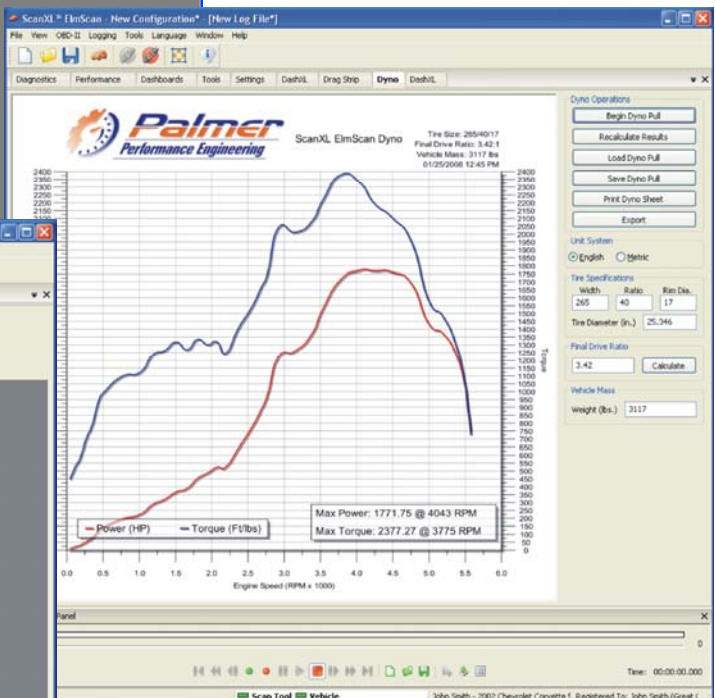
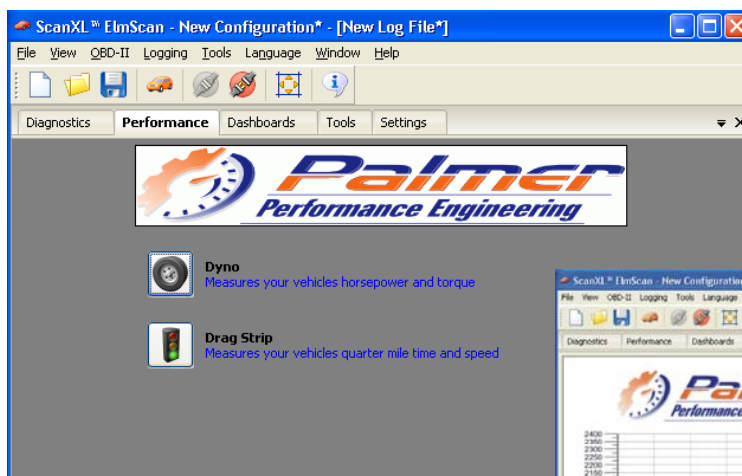
## PERFORMANCE



**Dyno** is used to measure vehicle torque and horse power (manual transmission only).



**Drag Strip** is used to measure vehicle acceleration and top speed.





## DASHBOARDS



**Gauges** displays virtual gauge sets.



**Graphs** displays graphs of sensor values.



**Tables & Maps** creates three-dimensional maps of sensor data.



**DashXL** creates a new DashXL gauges tab.



**Classic Dashboard** creates a new classic dashboard tab.





## TOOLS



**Console** shows a status and error log helpful for software troubleshooting.



**OBD-II Terminal** provides command-line access to the scan tool for troubleshooting connection issues.



**Calculator** displays a basic scientific calculator.



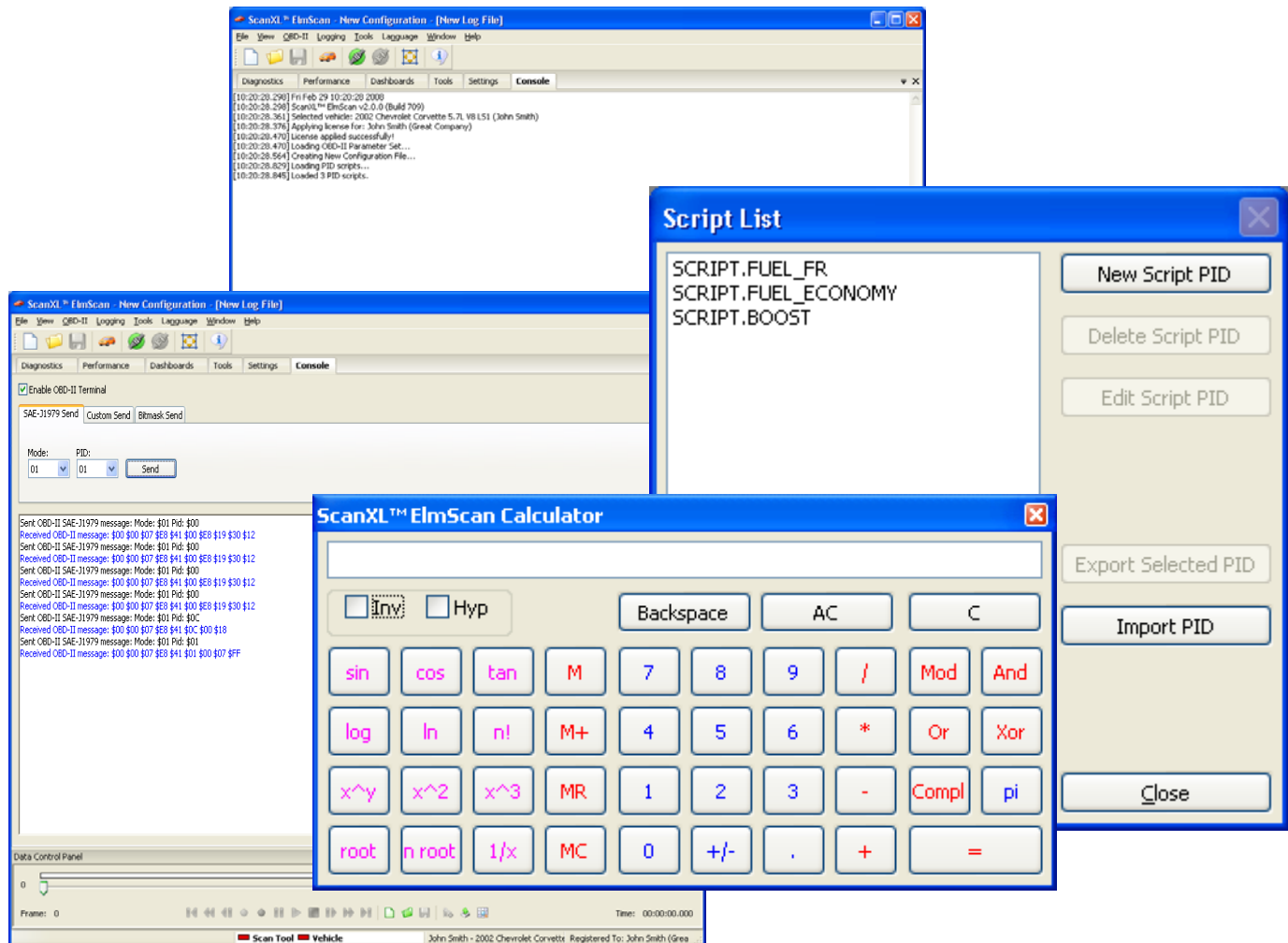
**Dashboard Editor** allows for customizing existing dashboard parameters.



**Script Editor** is used to automate ScanXL functions and create new useful features.



**Plugin Manager** adds software extensions that expand ScanXL's capabilities.





## SETTINGS



**OBD-II Settings** allows the user to select COM port and OBDII connection settings.



**Vehicle Info** stores extended information about the currently selected vehicle.



**Owner Info** stores extended information about the currently selected vehicle owner.



**PID Config** is used to select which sensors and data are active under **Data View, Alerts, Gauges, Graphs and Tables & Maps.**

